

MAIN FLOOR
1344 SQ. FT.

7'-5" - 10'-5" CEILING HEIGHT

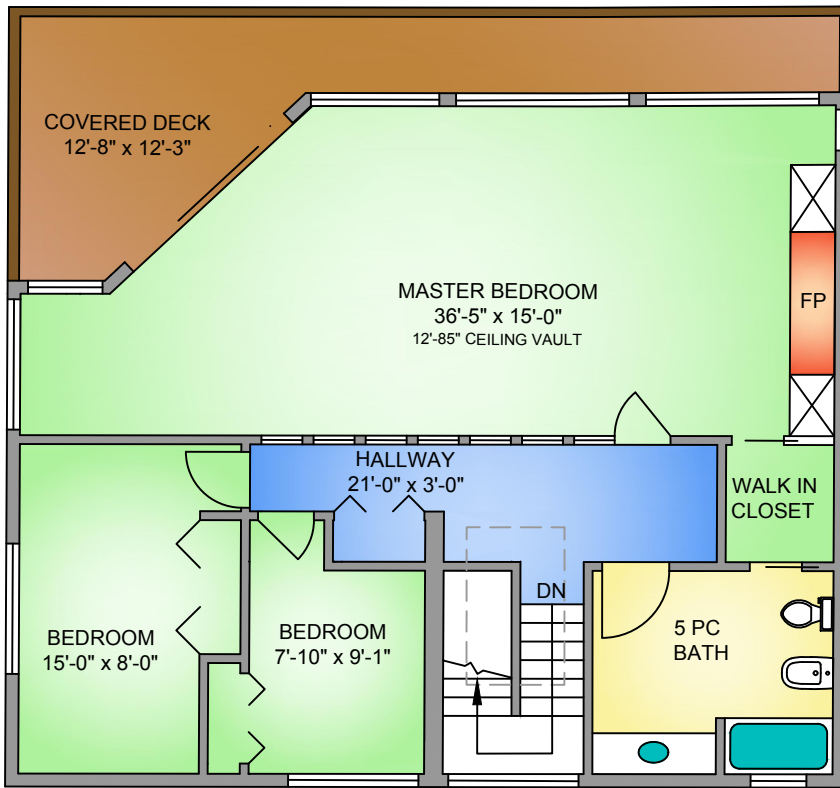


CARPORT
 18'-7" x 21'-0"

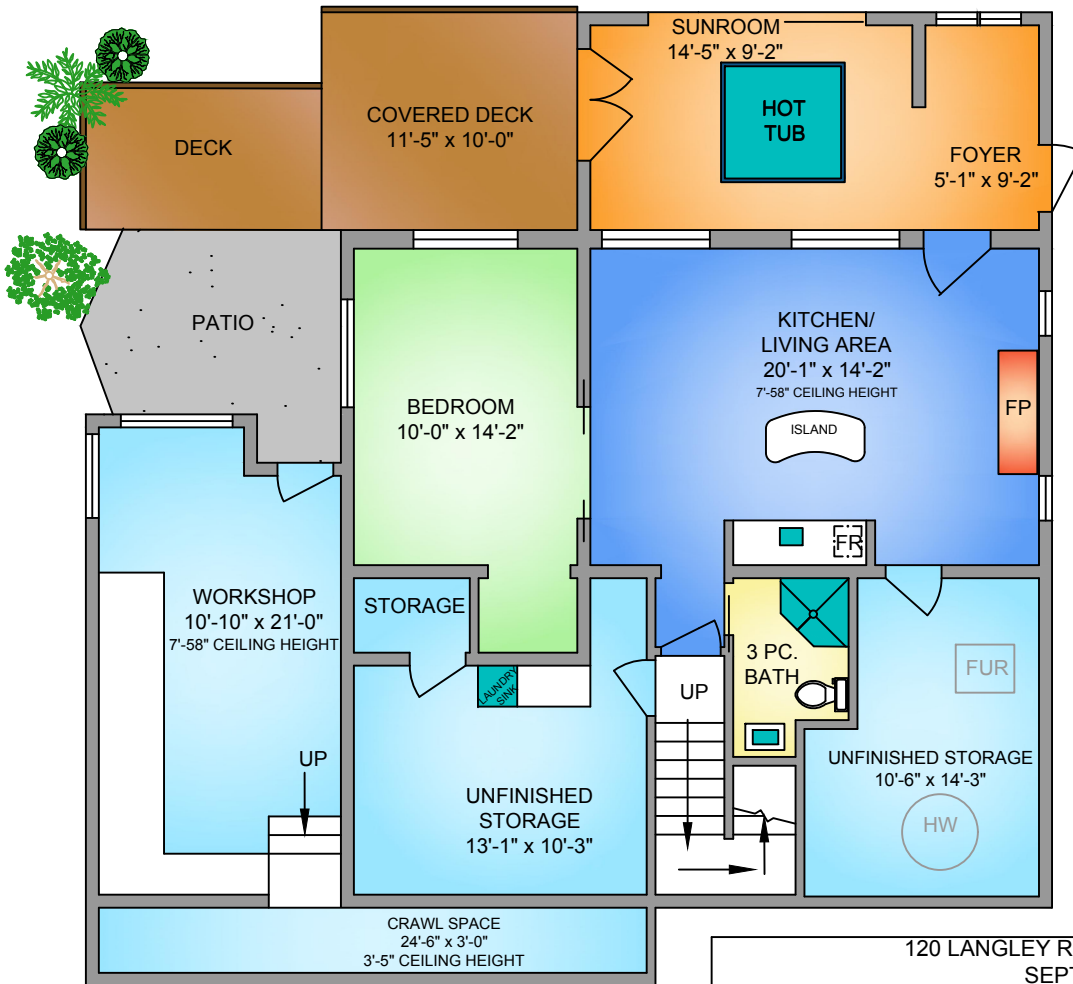
120 LANGLEY ROAD | SALT SPRING ISLAND
 SEPTEMBER 24, 2020

PREPARED FOR THE EXCLUSIVE USE OF SANDRA SMITH.
 PLANS MAY NOT BE 100% ACCURATE, IF CRITICAL BUYER TO VERIFY.

FLOOR	TOTAL	AREA (SQ. FT.)			
		FINISHED	UNFIN	CARPORT/STORAGE/WS	DECK / PATIO
MAIN	1344	1344	-	797	501
UPPER	1098	1098	-	-	195
LOWER	1124	790	334	243	180
TOTAL	3566	3232	334	1040	876



UPPER FLOOR
1098 SQ. FT.
 8'-0" - 12'-85" CEILING HEIGHT



LOWER FLOOR
790 + 243 +
334 SQ. FT.
 7'-5" CEILING HEIGHT

120 LANGLEY ROAD | SALT SPRING ISLAND
 SEPTEMBER 24, 2020

PREPARED FOR THE EXCLUSIVE USE OF SANDRA SMITH.
 PLANS MAY NOT BE 100% ACCURATE, IF CRITICAL BUYER TO VERIFY.

FLOOR	TOTAL	AREA (SQ. FT.)			
		FINISHED	UNFIN	CARPORST/STORAGE/WS	DECK / PATIO
MAIN	1344	1344	-	797	501
UPPER	1098	1098	-	-	195
LOWER	1124	790	334	243	180
TOTAL	3566	3232	334	1040	876